

WOLF VISIONS

THE PERIODIC NEWSLETTER FROM MISSION:WOLF

Volume 14, number 1

PO Box 211, Silver Cliff, CO 81252

Phone 719-859-2157

e-mail info@missionwolf.com

Web site @ <http://www.missionwolf.com>

TABLE OF CONTENTS:

REFUGE UPDATE

- Overview of M:W p. 2
- Eye to Eye with a Wolf p. 3
- Wildfires p. 3
- Internet p. 3
- Geriatric Wolves p. 3
- International Volunteers p. 4
- Staff Opportunities p. 4
- Winter in a Tipi p. 4
- Wish List p. 5
- Annual Dinner w/ Wolves p. 8

EDUCATION

- History of Ambassadors p. 6
- A Blue Wolfhound p. 6
- Maiden Voyage p. 7
- Spring Tour 2002 p. 8

FEATURES

- What is M:W ? p. 2
- Feature Wolf p. 5
- Wolf Pups Arrive p. 9
- The Culinary Wolf p. 11
- Crimzon Fund p. 12
- Saying Goodbye p. 13
- Coloring page p. 16
- Caretaker of the year p. 17
- Thank Yous p. 17
- Gifts p. 18



Kent Weber and Rami teach visitors about wolf behavior. Photo by Tracy Ane Brooks

FEATURED WOLF : RAMI

Rami, a nine-year-old gray wolf, is one of the gentlest wolves the Mission:Wolf staff has ever known. Her traveling adventures as an Ambassador Wolf have taken her from coast to coast, meeting thousands of people along the way. Rami is very unique in her ability to interact with children and is eager to leave her enclosure to travel in the wolf bus or meet visitors at the refuge.

Rami's life began in 1993, as one of six pups born to Raven and Nikkolah. She and her twin sister, Nyati, have been polar opposites from the start. Whenever someone would walk up to the fence when they were little, Nyati would shyly high-tail it to the den, while Rami would eagerly dash forward to greet people. Three of her brothers, Obediah, Aspen and Rasta now reside in nearby enclosures at the refuge. Her fourth brother, Crazy Horse, passed away in 1995.

Continued page 5

WOLF VISIONS 2002-03

This newsletter offers a brief insight into life with wolves at

MISSION:WOLF, COLORADO.

Welcome to Wolf Visions, this periodic newsletter is produced to inform, inspire and simply report on the progress made at the refuge. Over a year has passed since our last issue and in typical wolf fashion - there has not been a dull day since. As you will soon discover, when an environment exists where people thrive and work from sunrise till dark because they are so passionate about their projects, an energy is created that results in more accomplishments than one can comprehend or write about.

Starting in 2000, with the assistance of all staff and directors, we reviewed, revised and implemented many changes to our daily procedures. The result is a tangible improvement in the wolves' welfare and a huge increase in operating efficiency. Simultaneously the wolves received a gift from the estate of Eugene S. Principe Jr. that has allowed us to realize many goals. The land that the wolves call home is now truly theirs to keep and is fully paid for! In addition, the wolves own a new walk in freezer that is full of meat and a truck to haul it in. Wolf enclosure improvements include installation of 100+ gates and more than 2000 feet of fence. The upgraded solar system is capable of providing all of our electrical needs from lights to power tools. An endowment has been created and soon we hope to use the new community building and bathroom.

Alongside the pride of realizing the completion of many projects comes sadness with the steady passing of our elder resident wolves. Several of our friends died last year and with a colony of geriatric wolves we expect to lose more this year. For the first time in seven years we accepted five new pups over the summer. Their playful energy continues to influence the elders and lift the spirits amongst both wolves and people.

Wild wolves continue to make a comeback and are likely to disperse into a new state or two soon. The Ambassador Wolf Program is still traveling coast to coast annually and the public demands for nature experiences is still overwhelming. I trust you will enjoy this issue of Wolf Visions and hope you may find the ability to visit the refuge soon.

I thank all the amazing people who continue to make the refuge a beautiful place for both wolves and humans. Kent Weber



Peaches howls across the Wet Mountain Valley from the roof of our Staff Kitchen. Photo by Annie White

A Brief Overview

Mission: Wolf is a Non Profit 501-c-3 organization created in 1988 that offers:

- The rare chance for individuals to feel a connection with nature through a personal experience with a wolf.
 - A permanent shelter for up to 40 captive wolves and wolf-dog crosses located on a remote 409 acres.
- A national education program that features Ambassador Wolves and supports wildlife conservation and wild wolf recovery.
- A solar powered education center that provides visitors and volunteers a hands-on learning experience in sustainability.
- A 40 acre solar powered farm with horses, chickens, a garden, an office, a staff residence and a geriatric wolf care area.
- A plan that has secured 449 acres of habitat with potential to secure another 2000 acres adjacent to the San Isabel National Forest. This land will be placed in a land trust that will protect the area for the purpose of wildlife conservation.

Our **Mission is to inspire respect for all life**, be it wolf, human, plant, or insect.

As people learn respect for the wolf, a creature so hated in our society, they also learn heartfelt respect for all life.

Ultimately this respect is aimed at **supporting the enhancement and protection of wild habitat.**



Gizmo, Lily and Polar Bear enjoy frolicking in a midwinter's snow.
Photo by Tracy Ane Brooks

WHAT MISSION : WOLF IS

M:W is a peaceful wolf sanctuary located in the remote mountains of Colorado. We currently care for up to 40 captive-born wolves and wolf-dog crosses. The refuge supports a solar and wind powered visitor building that provides guests and students with an extensive amount of artwork and photography along with educational materials. Daily projects provide hands-on working and learning experiences. Socialized Ambassador Wolves travel nationally, providing eye to eye education as well as stimulating people to care about and respect nature.

OUR GOAL IS TO CONNECT PEOPLE WITH NATURE.

WHY MISSION : WOLF DOES IT

M:W was established to provide a shelter for some of the thousands of wolves living in captivity. Our first concern is the needs of the resident wolves: food, water, living space, companionship, and privacy. Fence building is a year-round project. After all, a happy captive wolf is one with a full belly and a big home.

In order to prevent more wolves from being born in captivity and to encourage the return of wolves to the wild, educational programs are offered both at the refuge and across the country. It is a major task to respond to the demands for education. In the fall and spring, the traveling Ambassador Wolves reach thousands of people, from coast to coast.

Our message stimulates and encourages people to connect with wildlife. When people look into the wild, yellow eyes of a live wolf, respect is learned. This inspires most people to get involved in the struggle to sustain and enhance wild ecosystems.

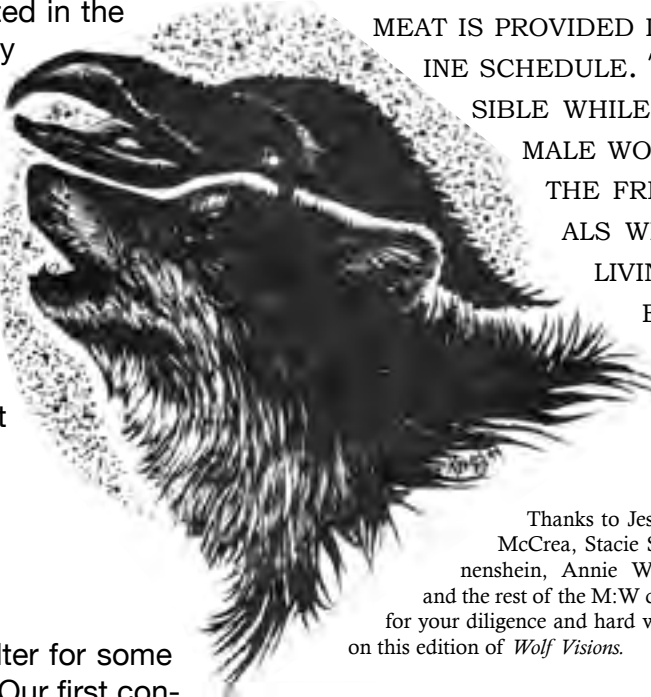
HOW MISSION : WOLF DOES IT

The staff that operates and oversees life at the refuge is comprised of dedicated people who care and are committed to making a difference with their lives. Interns and volunteers assist in all projects. We welcome any responsible volunteer who possesses a positive attitude and has energy to spare, while providing for their own shelter, food, water, and sleeping arrangements. A limited number of full-time staff are provided with shelter and food in return for their commitment to operate the refuge. M:W has no paid employees. Membership support, donations, and merchandise sales help us to buy food for the wolves and humans, purchase refuge land, support the traveling wolf program, and buy materials for fences and buildings.

THE WOLVES OF MISSION:WOLF

ALL OF THE WOLVES AND WOLF-DOG CROSSES LIVING AT MISSION:WOLF SHARE A COMMON TRAIT - THEY WERE ALL BORN IN A CAGE. DUE TO THEIR CONNECTION AND BOND WITH HUMANS, THE WOLVES AT THE REFUGE ARE SO IMPRINTED ON PEOPLE THAT THEY ARE NOT ACCEPTABLE CANDIDATES TO BE RELEASED IN THE WILD. FOR THIS REASON ALL OF THE WOLVES AT MISSION:WOLF MUST LIVE OUT THEIR LIVES IN CAPTIVITY.

IN THE SPIRIT THAT NO ANIMAL SHOULD HAVE TO LIVE IN A CAGE, WE DO NOT ALLOW THE RESIDENT WOLVES TO BREED AND PRODUCE MORE WOLVES DESTINED TO LIVE IN CAPTIVITY. FOR THE WOLVES ALREADY LIVING IN CAPTIVITY, OUR GOAL IS TO PROVIDE THEM THE HIGHEST QUALITY OF LIFE POSSIBLE. THIS IS ACHIEVED BY OFFERING THEM LARGE NATURAL ENCLOSURES IN WHICH TO RUN, PLAY AND HIDE. RAW MEAT IS PROVIDED IN ABUNDANCE ON A NATURAL FEAST AND FAMINE SCHEDULE. TO ALLOW FOR AS NATURAL BEHAVIOR AS POSSIBLE WHILE PREVENTING THE BIRTH OF MORE PUPS, THE MALE WOLVES ARE VASECTOMIZED. THIS ALLOWS THEM THE FREEDOM TO SATISFY INSTINCTUAL MATING RITUALS WITHOUT THE COMPLICATION OF MORE WOLVES LIVING IN CAGES. MISSION:WOLF IS A CLEAR EXAMPLE OF WHY WOLVES DO NOT BELONG IN CAPTIVITY. IF WE DO OUR JOB WE HOPE TO PUT OURSELVES OUT OF BUSINESS THROUGH PUBLIC EDUCATION.



Thanks to Jessica McCrea, Stacie Sonnenshein, Annie White and the rest of the M:W crew for your diligence and hard work on this edition of *Wolf Visions*.



Barefoot on the beach with ambassador wolf Sila. Photo by Tracy Ane Brooks

Wolf Visions, copyright Mission:Wolf Web Site @ <http://www.missionwolf.com>

Copyright privileges are granted providing articles are reprinted in whole and credit is given when appropriate.

PO Box 211, Silver Cliff, CO 81252

Phone 719-859-2157

Fax 719-746-2919

e-mail - info@missionwolf.com

Write for information regarding wolf programs, visits, volunteering, membership and directions.

Directors* and Staff 2001-2002 Ed Forgham-Bailey, Shauna Baron, Joshua Beck, Steve Beights*, Kathy Bennett, Nelson Brooke, Tamas Brooks, Tracy Brooks*, Joshua Byer, Jan Conway*, Heather Higgins, Kevin Honness*, Vandy Hubackova, Geoff Hunt, Angelo Lombardo, David and Julie Kreutzer*, Cristin Culbreath-Martin, Gregory Martin, Jessica McCrea, Yvonne Mueller, Will Rounds, Michael and Sara Stenson*, Kent Weber*, Randy and Sarah Woods*, Jeff Schwartz*, Stacey Sonnenshein, Jason Stolte, Peggy Strushacker, Mark Vanselo, Annie White, Tom Zieber

Printing Services by Mountain Mail, Salida, CO

EYE TO EYE WITH A WOLF

As Mission:Wolf evolves, more of our effort and expense is focused on public education. Day after day we meet people who have never seen a live wolf and who often retreat in instinctual fear upon meeting one up close. With knowledge and a personal experience any fear is easily overcome and often transformed into compassion. It has become our job and lifelong journey to help wild wolves through public education. It has also become clear that all of the lectures, films, photos, and books combined do not compare to a personal encounter with a live wolf.

Today Mission:Wolf is fueled by a public demand for people to touch, feel, smell, hear and taste nature. It has become our greatest gift to help not only wolves, but people as well by providing individuals with a personal experience. Below we list a few ways to gain this experience.

VISITS TO THE REFUGE

The isolation of the refuge provides the resident wolves with a peaceful sanctuary. It also means that to visit the refuge we simply ask people to come prepared for the mountain weather. Any visitors that arrive between 9:00 am and 6:00 pm will be offered a tour of the refuge (30 min. to 1 hr., depending on interest). After the tour, individuals may observe the wolves, explore resources and gifts in the visitor building or volunteer to help on a project. Camping and extended stays are welcome. The rules are simple: as long as you do not place a burden on the staff or startle the wolves, you are allowed to camp and enjoy the howling.

GROUP FIELD TRIPS AND CAMPOUTS

With advance notice Mission:Wolf will provide a staff volunteer to conduct a group tour of the refuge. Group community service projects are encouraged. An encounter with an Ambassador Wolf will be offered when possible.

BRING THE AMBASSADOR WOLF PROGRAM TO YOUR TOWN

The Ambassador Wolf Program reaches thousands of people across the United States each year. The wolf program is in high demand and requests are handled on a first come, first served basis. Tours to the western U.S. are in the spring, whereas tours to the eastern U.S. are in the fall. See our web site at www.missionwolf.com for details.

WILD WOLF EXPERIENCES

Twenty years ago it was nearly impossible to see wild wolves anywhere in the U.S. Today wild wolves reside in twelve states and efforts are underway to return them to several others. For the first time in our history any individual with a bit of patience and the ability to travel may gain a personal experience with a wild animal. There are many organizations with expert guides that provide education while leading people in search of wildlife... for more information, please see our website - www.missionwolf.com.

FEED A WOLF AND BECOME A WOLF CARETAKER

Our membership program supports the food bill for the resident wolves and provides caretakers a quality color photograph of their chosen wolf. Newsletters provide updates on the refuge and wild wolf recovery.



Kevin Honness gives a tour of the refuge to a group of interested visitors. Photo by Tracy Ane Brooks



Obediah howls on the rocks during a snow storm. Photo by Tracy Ane Brooks

Western Wildfires and Mission:Wolf

Typically, winter snowstorms strand staff and prohibit vehicles from making it within five miles of the refuge for weeks at a time. Spring rains usually turn the roads to slime and drench the heartiest campers. However, this year M:W received only two, 8" deep snowstorms which melted away quickly. The spring rains have disappeared and for the first time in our history the refuge is dry, dusty and in prime fire potential condition.

THE INTERNET ARRIVES AT MISSION:WOLF

After years of bouncing down miles of dirt roads to the nearest phone line in a frantic effort to respond to public requests, we now have e-mail at the refuge! M:W acquired a solar powered, satellite operated e-mail system this spring that actually works. We still have limitations (solar power and time) but people can now reach us directly at the refuge using our new e-mail address:

info@missionwolf.com

As Colorado and the West struggle through a drought resulting in massive wildfires, the staff at M:W finds themselves facing the reality of evacuation. To be successful we need to relocate up to 40 wolves, 3 horses, 25 chickens and a dozen or more staff within a few hours.

To prepare for this we have defined an emergency evacuation plan. Under this plan, with support from numerous veterinarians, most of the wolves will be tranquilized, loaded into airline kennels and transported to safety. Our old wolf program school bus has been set up to transport over 15 wolves. We are still in need of more airline kennels to ensure the safe transportation of so many animals. A few of the wolves that are more easily handled will be loaded into the wolf kennel of the Wolfhound or into other vehicles, including horse trailers. Various people with secure barns and animal shelters have been identified and are on call to receive wolves at a moment's notice.

In case a fire should start near the refuge we have created our own fire truck. We outfitted our old flat-bed 4x4 truck with a 500 gal. water tank and a high pressure water pump. We all hope that our emergency evacuation plan and fire truck will never be pressed into use, but we also recognize that it is necessary to be prepared for such a travesty. With lots of luck and the grace of nature, Colorado and the rest of the West will have a wet, snowy fall and winter.

GERIATRIC WOLVES

THE FIRST PRIORITY AT MISSION:WOLF IS THE CARE OF OUR ANIMALS. OUR SUCCESS IS INDICATED BY THE FACT THAT WE HAVE WOLVES LIVING TO 15 YEARS OF AGE OR OLDER. THIS IS COMPARED TO THE 8 YEARS A WILD WOLF WOULD BE EXPECTED TO LIVE, OR THE 3 YEARS THAT MANY CAPTIVE WOLVES AND WOLF-DOGS LIVE.

ALONG WITH OUR AGING POPULATION COMES A LARGE INCREASE IN BILLS FOR VETERINARY CARE, MEDICATIONS AND NUTRITIONAL SUPPLEMENTS. THE **CRIMZON FUND** HAS BEEN ESTABLISHED TO ASSURE THE STAFF HAS THE NEEDED RESOURCES TO PAY FOR THIS CARE.

(PLEASE SEE PAGE 13 FOR FULL ARTICLE)



Eleven-year-old Peaches yawns in the sunlight after this year's first snowfall. Photo by Kathy Bennett

INTERNATIONAL VOLUNTEERS

Each year Mission:Wolf hosts two or three international work camps. These camps are organized by Service Civil International / International Voluntary Services (SCI/IVS) around the world as a means of promoting global peace and understanding.

Our job as a host is to provide local transportation, food, shelter and a project with tools, materials and leadership. The international campers' job is to provide their own transportation to the local bus depot in Walsenburg and to come equipped with tent, sleeping bag and warm clothes. In the back of our trucks every summer, we haul several road weary travelers up the dirt road to M:W.

For three weeks a dozen individuals led by a M:W staff volunteer tackle tremendous jobs including wolf enclosure expansions, feeding wolves, building cabins, cutting firewood, improving visitor paths and other refuge projects. In the process, hundreds of M:W visitors and staff become intertwined as language barriers transform into comical charades. At the end of three weeks of working and eating as a community, a family emerges full of pride at the amazing accomplishments that can be made by a small group of individuals.

2002 marks our twelfth year hosting SCI/IVS Camps. International participants in past camps ranged from a 13-year-old girl from Austria to a 63-year-old grandmother from Germany. Over two hundred individuals have become a part of a huge extended family that stretches worldwide. Each summer, for nine weeks, visitors will find M:W buzzing with unique accents and friendly people from many far places.

M:W has provided a day of work from each camp to support community projects in both Custer and Huerfano Counties. Projects include helping to construct and maintain a local food store/co-op to installing road signs for our local homeowners' association. We also expose each group to the beauty of hiking in the Great Sand Dunes National Monument and the romance of the American Cowboy at local rodeos.

The staff of M:W looks forward to meeting the new international volunteers each summer and offers a huge thank you to all the individuals that continue to make this project a success.

M:W STAFF OPPORTUNITIES

Individuals from many walks of life have offered much to make the refuge what it is today. To keep up with the increasing public demands for nature experiences and education, M:W staff positions continue to become more formalized and challenging.

We offer several different opportunities to self-motivated people. If you are interested and desire a challenge to learn about wildness while offering to help care for wolves and visitors, M:W needs your support.

All visitors and volunteers are asked to provide their own transportation and come self sufficient with their own food, bedding, tent and other items for the first two weeks at the refuge.

Dedicated individuals may be offered a staff position. A two-month minimum commitment is required. In return, staff receive food privileges and a tipi or cabin to sleep in. A six-month option may be available which provides room, board, stipend and limited use of refuge vehicles. Internships may be accepted on an individual basis.

We need staff for this winter and summer. See our web site for details.



Mission:Wolf staff members A'Lissa, Josh, Kent, Tamas, Thomas and Traci, along with Lenka, George and Sam from SCI load logs onto the trailer while gathering tipi poles and hand rails near Leadville, CO.

Photo by Nelson Brooke

A Winter at Mission:Wolf

Will Rounds, a long-time volunteer for Mission:Wolf, spent the winter of 2001-2002 living in a tipi at the refuge.

It is a peaceful morning; the chill of the night dissolving under a bright mountain sun. Aspen leaves lightly caress the wind, and the wind in turn caresses my face. The sky is pure blue but for the chalk etching of moon. The mountains, waves of dark green in the distance, break and spill into one another. Ravens dance and perform in the rising sun, their wings slicing the air like rips of wind.

And then there are the wolves. Their morning howls, games, and fights are over. Now they bask like reptiles in the sun, barely moving save to yawn or stretch a paw. The crunching of bones rocks through the valley as a wolf, hidden in the aspens and shadows of the gully, enjoys a morning snack.

This is Mission:Wolf. I found that it is as much a sanctuary for humans as wolves; a place to crawl away from some of the madnests of the world, a place to rediscover simple rhythms of life.

Winter days begin by cracking the ice that forms in the wolves' water tubs. It is a constant struggle - every morning we crack the ice with crowbars, and every night it sneaks back in while we sleep. Some days are easy, filled with a warm and promising sun. The ice shatters with the lightest tap against it. Other days start cold with no promise of sun peeking through cloud. On such days we must face wet gloves sticking to the crow bar and to fences, frigid water spraying our faces and legs, raw cold tearing fingertips to bone.

Yet cold is not all we must be wary of. With wolves as our neighbors, we must learn to watch our steps, our actions and our reactions. Everything we do will bounce back to them in some way. Thrusting a metal bar through the fence may be a threat to some, an exciting toy to others. We watch our hands around them because they are also watching our hands - a move too quick and careless could cause them to run in a fearful flash or snap their sharp teeth just as quickly. But a calm energy can prevail once we tap into the individual wolf's rhythm, learn what makes her relaxed, what makes her anxious, what makes

her angry. If we are calm, peaceful - then they are serene like the moon or the sun or the mountains.

I often pause to catch my breath and try to regain a little patience with the unyielding ice. It is glorious, standing on the mountain side, to feel the chill breeze that stirs my heart and the fingers of the pinon pines. As I hike from tub to tub I watch clouds roar over the mountains like a roiling avalanche caught in a frozen patience. Listen to mumbling guttural croak of ravens. Smell warming dirt as it casts off last night's layer of snow. I look around myself, and am reminded of why I am doing such a thing. Their howls and their deep stares are the reasons why I am here. And not just of these wolves, though they are important and dear to my heart, but of the wolves that should be here, striding through the pinons and ponderosas, hunting the elk, with no fence to bar their freedom. At Mission:Wolf we're trying to keep hope of this alive. Not only keep it alive, but help it grow.

The rhythms of life are loud out here and they are everywhere. They are in every graceful wolf step, in every breath the wolves exhale as vapor clouds on these cold days. We notice rhythm in the sun as it guides our every minute between waking and sleep. We notice rhythm in the moon with its shifting phases as the night sky beckons us before bed to sit and watch and listen.

A cloud like upraised raven wings drifts by the moon. Wind roars into the aspens like waves crashing into a craggy coastline. The wolves howl. They yammer, they yelp. They snarl deep like the rocks and echo like wailing dead. They talk to the stars that are pasted all over the sky.

A land of wolves, mountains, and serenity . . . a big enough world for me.



Mission:Wolf overlooks the winter wonderland wilderness of the southern Colorado Rocky Mountains.

Photo by Tracy Ane Brooks



THE PROMITORY DIVIDE AT MISSION:WOLF.
Photo by Annie White

LAND UPDATE

Mission:Wolf has successfully secured 449 acres of land. Of this, 191 acres have been placed in the wolves' names. An additional 258 acres of adjacent land is privately owned and earmarked for conservation as soon as M:W has funds available. In total, Mission:Wolf has secured a 50 acre refuge, a 40 acre farm and 359 acres of habitat set aside for conservation. To assure the long-term future of the wolf refuge and protect vital wildlife habitat and watersheds, M:W has created a plan known as the Mission:Wolf Wilderness Preserve.

In 1986, the need to locate a remote parcel of land to create a wolf sanctuary directed the refuge to its current location. For several years our nearest neighbor lived seven miles away. Today that distance is less than two miles. After years of dreams, discussions, and serious consultation, Mission:Wolf identified a land project that is defined by three phases based on priority.

Phase I is dedicated to the future of the wolves of M:W. When complete this will include a 490 acre nature center adjacent to National Forest and State Trust lands. This land surrounds the existing 50 acre wolf refuge which includes a Veterinary Building, a Tool Shop, Staff Quarters, Community Kitchen, Camping Area and a Visitor Center. This plan also includes a separate 40 acre facility, "the farm," that includes an office, barn, garden, directors' residence and geriatric wolf care area.

Phase II is a land conservation project that includes nearly 1,300 acres of private, subdivided land bordering the San Isabel National Forest. This land, known as the Promitory Divide, lies south of the refuge and provides watershed for five drainages into the national forest. It also serves as a wildlife migration corridor between the Sangre de Cristo and Wet Mountain ranges.

Phase III is a 1,000 acre land conservation project designed to preserve the Williams Creek Drainage north of the refuge. This land bordering National Forest is partially developed and has an active year round stream with ponds. It is likely to be more expensive and is expected to be our biggest challenge.

At this time we have almost completed Phase I. We have secured as much land as our credit limits and assets allow. Our current land debt exceeds \$70,000. If you would like to help us meet our goals it can be done in several ways. One is to simply donate the

money to help pay off our current debt. Another is to donate the land itself or the money to buy a specific parcel (\$25,000 to \$75,000 per parcel). A more complicated yet feasible way for M:W to achieve this goal is to simply encourage individuals to purchase the available land, retain title and use of the property while protecting future wildlife with the benefits of a tax deductible conservation trust plan.

If you desire to become part of Mission:Wolf's Land project contact Kent at 719-429-9653.

FEATURE WOLF RAMI continued from page 1

For her first three years, Rami lived with alpha female Sila and began her career with the Ambassador Wolf Program. Sila taught little Rami all about life on the road and helped her feel comfortable being in front of large and excited audiences. One of her first programs was at Cornell University in Ithaca, where she came running on stage to greet Sila and Fenris (her traveling companions at the time), then proceeded to look up into the audience of 750 people. The audience sighed a breath of awe that sent Rami running right back to the bus. She has since overcome her fear of audiences and now demands to be the first one in the door for programs.

Today Rami has an accomplished resume that includes appearances on all major television networks. She was featured in National Geographic's World magazine in 1998, Outside Kid's magazine in 1999, and on National Geographic Television in 2001. Through her travels, Rami has earned the reputation of having the largest territory of any wolf in the United States. She has marked her territory from the shores of Oregon to the skyline of New York, and from the forests of the Smokies and the rolling hills of Montana to the Gulf Coast shoreline.



A room with a view: a tipi at Mission:Wolf
Photo by Annie White

W i s h L i s t

As the refuge staff works through another year we find ourselves in need of a few items. It seems many people are eager to help when they know what we need. Although most of our projects require substantial amounts of money and materials beyond the reach of many supporters, basic daily supplies help us just as much in reducing our daily operation costs. The M:W staff has unanimously agreed that the following items will be put to good use.

WOLF FEEDING SUPPLIES:

ELECTRIC MEAT SAW - HAND HELD STYLE
HIGH QUALITY BUTCHER KNIVES
BOXES AND BOXES OF RUBBER GLOVES
MEDIUM, LARGE AND X-LARGE COVERALLS

WOLF CARE AND FENCING SUPPLIES

CANINE STRETCHER, STAINLESS STEEL TABLES, WASH TANKS,
STAINLESS STEEL TRAYS, HEART MONITOR, BLOOD O2 MONITOR,
MICROSCOPE, DRIP LINES, GENERAL ANTIBIOTICS,
LARGE AND XL AIRLINE KENNELS (NEED 20 MORE FOR FIRE
EVACUATION), STAINLESS STEEL WOLF PROOF KENNEL,
CHAIN LINK FENCE (9 GA., 8' TALL), 2' DIA. STEEL POLES
(10' LONG), DOOR HINGES FOR WOLF FENCES,
TREATED WOOD BEAMS

REFUGE OPERATION TOOLS AND SUPPLIES:

HEAVY DUTY WASHING MACHINE, PAINT BRUSHES,
BATTERY POWERED TOOLS - DRILLS, SAWZALL, CIRCULAR SAW
WORK GLOVES (ALL SIZES)

OFFICE NEEDS - BIG AND SMALL:

PHOTOGRAPHIC PAPER FOR INK JET PRINTERS
LAPTOP COMPUTER CAPABLE OF RUNNING WINDOWS 2000
DESK LAMPS, HANGING LAMPS, DRAFTING TABLE & STOOLS, PENS

EDUCATIONAL MATERIALS - WOLF BUS:

PORTABLE PA AMP AND SPEAKER(S)
WIRELESS MICROPHONES (2)
WOLF BOOKS TO DONATE TO SCHOOL LIBRARIES
INTERPRETIVE DISPLAYS

BUILDING MATERIALS:

FLAGSTONE AND SAND FOR PATHWAYS, LOG POLES FOR HANDRAILS
EXTERIOR WOOD SIDING, TRIM, PLYWOOD, ROOFING AND NAILS
EXTERIOR WOOD SEALER, WHITE ENAMEL PAINT
HARDWOOD FLOORING

PARCEL SHIPPING ADDRESS FOR UPS, FED EX, ROADWAY...

MISSION:WOLF
80 SHEEP CREEK RD.
WESTCLIFFE, CO 81252

Education vs. Extinction

THE HISTORY OF AMBASSADOR WOLVES

Ambassadors come in all shapes, sizes and species. Ambassador Wolves are often wolves raised in captivity that cannot survive in the wild, are imprinted by humans, are tolerant of leashes and accept traveling to meet human crowds. Many different Ambassador Wolves have made public appearances across the United States, starting in the 1950's with Lois Crisler. In the 1960's Jack and Sally Martin lead the way with a wolf named Kazan. In 1969 John Harris traveled with two wolves named Clem and Jethro. He worked with more than 15 wolves until his death in 1985. Today the Clem and Jethro Lecture Service is lead by John's companion Pamela Brown. In the late 1970's and early 1980's Beth Duman worked with a wolf named Nahani. By the mid 1990's several Ambassador Wolves were busy inspiring humans, including Koani of Wild Sentry in Montana.

At Mission:Wolf we meet many people who excitedly re-play their once in a lifetime experience of meeting an Ambassador Wolf years ago. Although both the wolf and handler may now be deceased, the individuals recall their experience as if it happened yesterday. No book, video, movie or picture has the same impact as a face to face experience.

Each year America loses more wild habitat due to human encroachment. At the same time we are finding more people that have never had a wild experience and have little understanding or respect for nature. It is this missing wild experience that now motivates people to seek nature. All of the National Geographic and Animal Planet Specials combined will not satisfy this drive Americans have to experience a personal connection with nature.

Today, it is this drive that fuels the Ambassador Wolf Program of Mission:Wolf. It is the connection the wolves provide that re-kindles and builds a greater respect for nature, and ultimately a greater respect for each other.

A BLUE WOLFHOUND

It has been nearly two decades since Mission:Wolf's founder Kent Weber discovered the difficulties presented in trying to transport live wolves. The first few experiences were in the back of a pickup truck in an unexpected attempt to rescue a neglected or homeless pet wolf or wolf-dog. Over the next few years the unexpected transportation woes were reduced by improvements in vehicle selection and design.

As public demands for nature programs increased and we discovered better ways to transport wolves, the Ambassador Wolf Program evolved. By focusing on keeping the wolves content while on the road we discovered that the wolves became excited to travel. For the few wolves unafraid of humans and traveling, it became obvious to audiences across the country that these animals were actually enjoying their job. This thrilled audiences and in return the wolves quickly learned how to work the audience. The excitement this offered to communities brought the wolves of Mission:Wolf in contact with over a million people in just a few years.

Today the wolf program continues to turn away more requests than we can handle. Much of the success of the Ambassador Wolf program over the last few years is due to the **Wolfhound** - the name for a renovated Greyhound bus purchased in 1998. However, as the summer of 2001 passed, it appeared that the Wolfhound, already with 2.5 million miles on it, would not make it across the country again. Common sense prevented us from trying to use it to transport Ambassador Wolf Rami back to New York for fear that it would leave us stranded on the side of the road. With only a few weeks left until departure of the tour, we started the quest to find a newer bus.

A LEAP OF FAITH

On September 14th, 2001, amidst a nation full of anxiety and fear, we questioned our commitments and evaluated the need to complete our fall tour to New York. Just as we were about to submit to our fears and bus woes and cancel the tour, serendipity occurred. We located a bus suitable for our needs and in a leap of faith, Kent signed a loan with our banker and purchased a retired US Marine Corp bus. The blue Wolfhound is 14 years younger than the previous one and has 2.1 million fewer miles on the odometer.

On the journey home we purchased the materials to convert the bus from a people hauler into a roadworthy Wolfhound. In true M:W style, volunteers from more than two hundred miles away dropped their own projects, traveled to the refuge and began working on the bus. For two weeks straight, people worked from sunrise till midnight and managed to complete a project that a professional conversion facility said would take two months.

COAST TO COAST IN THE WOLFHOUND

On October 1st, 2001, Ambassador Wolf Rami and the three person education team climbed aboard the new Wolfhound. As midnight approached, the bus roared to life and departed the refuge for its maiden voyage to New England. (See The Wolfhound's Maiden Voyage story on p. 7 for details). After covering several thousand miles the Wolfhound made it safely back to the refuge in less than five weeks.

In March of 2002 the bus underwent a major engine rebuild in preparation for our annual tour to the Northwest in April. By May the bus successfully completed another 5000 mile tour (See Spring Tour story on p. 8 for details) and returned to the refuge in time to enjoy a Rocky Mountain spring. From a business point of view the bus is a huge liability to operate. In an attempt to keep the program rolling we have incurred more than \$50,000 of debt. We know that the success of wolf recovery will not be achieved from a business point of view and accept this financial burden. Mission:Wolf is grateful for any and all donations in support of wolf education.

No article on the status of our wolfhound could be complete without a huge thanks to Dennis Weber who continues to offer his time and mechanical expertise to ensure that the Wolfhound will make it across the country yet again.



Ambassador wolf Sila with Tracy, Kent and Tamas in the old school bus. Photo by Catherine Leroy

ANNOUNCING: WOLF PROGRAM TOURS FALL TOUR 2002

- 10-2 Middleport Elementary School - Middleport, NY
- 10-3 Preserving the Earth Through Education - Rochester, NY
Genesee Country Village and Museum, 7pm - Mendon, NY
- 10-4 Three programs at middle & high schools - Canandaigua, NY
- 10-9 Massabesic Audubon - Auburn, NH
- 10-15 Vermont and Maine
- 10-16 US Fish and Wildlife Service - Hadley, Mass
- 10-17 SUNY Oneonta, 7:30pm - Oneonta, NY
- 10-18 Western Middle School auditorium, 7-9pm
Greenwich, CT
- 10-21 Schools of Westchester & Putnam counties, New York
- 10-22 Schools of Westchester & Putnam counties, New York
- 10-23 Rutgers University, 7pm - New Brunswick, NJ
- 10-24 Albany Law School, 7:30pm - Albany, NY
- 10-25 Pine Hill Community Center, 6:30 & 8pm - Pine Hill, NY
- 10-26 Beaver Lake Nature Center, 1, 4 and 7pm - Baldwinsville, NY
- 10-28 Area schools and Cornell Extension, 7pm - Dryden, NY
- 10-29 Cornell University, 7pm - Ithaca, NY
- 10-30 Wells College - Aurora, NY
- 11-1 Schools and evening program, 7pm - Irondequoit, NY

Early November Programs in Colorado

See our Web site for more information

“www.missionwolf.com”

THE BLUE WOLFHOUND'S MAIDEN VOYAGE TO NEW ENGLAND

FALL TOUR 2001

By midnight on October 1st staff educators Kent Weber, Cristin Culbreath-Martin and Gregory Martin pulled out of Mission:Wolf with Ambassador Wolf Rami enroute for a five week education tour reaching from Colorado to Maine. Our first stop was at Fine Line Graphics in Denver where, in a record four hours, the white Marine Corps bus was transformed into a colorful Wolfhound complete with a life size graphic design of Ambassador Wolf Sila's reflection on the back of the bus and giant wolf eyes across the front. The satisfaction we felt as we rolled across the Kansas state line was awesome; we had managed to achieve our absurd goals of building a new Wolfhound in two weeks and were nearly a day ahead of schedule. Little did we know it was the calm before the storm.

The first five hundred miles of our journey east went smoothly and we finally received our first full night of sleep in weeks. However, only a couple of hours into our second day a major engine problem stopped us in our tracks. We reluctantly took up residence for the next three days at Tony's Diesel Shop in Boonesville, MO. We cringed as the mechanics removed broken shreds of metal from inside our motor and predicted it would take \$15,000 and ten days to get us rolling again! Regretfully, we started calling ahead to cancel our first week's events. Emotions among the people ran high, yet Rami seemed perfectly calm, eating her bones and sleeping in between her runs.

Refusing to accept the prognosis and offering the mechanics extra money to cover overtime hours, we put a \$3,000 bandaid on our motor, started it up and headed down the road. We were supposed to be on stage in Connecticut in less than 29 hours and still needed to put in a 24 hour drive to get there. Although we were exhausted, irritable, and bruised, we drove all night and arrived on time to celebrate Rami's return to the east coast with several hundred people. An anxious crowd enjoyed the event and never knew of the trials we went through to reach our goal.

We were silenced as we viewed the New York City skyline from the interstate. We could feel the sense of fear and concern around us; people were courteous, yet aware and weary. We soon remembered the reason we were there: Rami. The uplifting impact this one wolf offered that week to so many people inspired and fueled us as we traveled from event to event. On stage in front of hundreds, Rami sat unusually content while a woman came out of the audience, walked up on stage and lay down beside her. The woman seemed to be in her own world, unaware of her disruption and oblivious that other humans were even present. Rami greeted her with her eyes, then went back to resting. The woman smiled and left the stage. Later we were told that this woman had lost family in the World Trade Center and that Rami was the first to pull her out of her despair.

After our first few programs we found ourselves in the midst of so much TLC that our woes faded and our



Mural of Ambassador Sila's reflection by Tracy Ane Brooks on the new Wolfhound.
Photo by Annie White

bodies were renewed. With a day of rest and relaxation, a clean bus, and bellies satisfied, we smiled, shook our heads in disbelief and knew we had done the right thing.

After a successful week of events around New York we found ourselves driving north in heavy rain through Boston. Late



Rami relaxes while Kent teaches a University of Colorado audience about wolves.
Photo courtesy CU Sinapu



Cristin, Yvonne, Will, Tom, Ed, Nelson, Dennis, Kent, Tracy, Tamas and Gregory celebrate the 2am completion of the new Wolfhound on the morning the fall tour began. Photo by Nelson Brooke

one night the water crippled the bus's electrical system and turned the engine off while the bus was rolling down the interstate at 65 miles an hour. A quick shift into neutral allowed us enough momentum to coast to a stop on a narrow and tilted off ramp. A botched AAA service left us sitting for fourteen hours waiting for a tow truck that never showed. Perseverance paid off as Kent spent all night on the phone until we found a shop and tow truck that was willing to help. To our delight, we found that the only diesel shop that would work on the bus happened to be located only four miles from the Massebesic Audubon Center in New Hampshire, where we were scheduled to do a presentation that night. Miraculously we made it to the center on time for our sold out event and managed to get the bus running.

An extravagant resort known as the "Balsams" in Dixville Notch, New Hampshire was the site of National Wildlife Federation's conference, "Restoring Wolves To The Northern Forest". The hotel required Kent and Gregory to wear suit jackets after six pm. Can you imagine handling a wolf with a suit jacket? It took Rami less than 30 minutes to remove both buttons on Kent's jacket.

After the conference, we camped out near Mt. Washington and enjoyed running with Rami through the White Mountain National Forest. With a month of programs behind us, we tucked our tails and headed west. In Oxford, Ohio we completed the final four programs of the tour and indulged in the comforts offered by the Beck family. A minor detour led the bus to Wolf Park in Indiana. The folks there offered Rami a pen to exercise in and the opportunity to strut her self in front of other wolves. She held her tail high as if she were the queen of all wolves.

In thirty-three days we presented thirty-four programs in seven states covering 7,300 miles. We returned home to Mission:Wolf under beautifully clear and sunny skies, and to an enthusiastic staff who had prepared a celebratory feast for both people and wolves.

We are grateful to all the people who have taken part to help us achieve our goals and to the hundreds that stand behind us. We may have never completed the journey without your support. We would like to extend a special thank you to the following people:

Fine Line Graphics
Irene Larusso - Friends of M:W
Shauna Baron
Peggy Struhsacker
Donna Schroeder of NYS
BOCES
National Wildlife Federation
Sara Mattes
CU Sinapu

University of New England
Pam Brown
Environmental Law Society of
Albany Law School
Ulster Community College
SUNY Delhi
Cornell University
Genesee County Village
Museum

Beaver Lake Nature Center
Roger Tory Peterson Institute
Monty, Pat, Dr. Klinghammer
and the staff at Wolf Park
Tony's Diesel
The Beck family in
Oxford, Ohio
Bob at Colorado Mtn. Bank
Dennis of D&J Repair

SPRING 2002 EDUCATIONAL TOUR - Northwest U.S. By Josh Beck

Ambassador Wolf Rami visits old friends throughout western states, creates new friendships and teaching partnerships with the Lakota Sioux tribe in South Dakota, opens the 14th annual interagency wolf conference in Boise, and marks her turf along the way.

SOME OF THE NUMBERS OF WHAT OCCURRED IN A BUSY FOUR WEEKS:

- People visited with during formal events: 4000+
- Total programs: 33 (don't forget the numerous parking-lot-programs)
- Time on the road: 31 days
- States visited: Colorado, Utah, Idaho, Montana, South Dakota.
- Total miles driven in Wolfhound: 5,100 miles

It's been fifteen years now since Mission:Wolf's first educational tour; spring tour 2002 proudly continued this vital and necessary tradition by teaching respect for not only wolves, but for all that is wild.

Educators Kent Weber and Joshua Beck, accompanied by nine year old gray wolf Rami-a seasoned veteran in the role of championing respect for wild-life-traveled throughout the Rocky Mountain states this past spring speaking with thousands of people of all ages about valuing our healthy ecosystems and supporting wild wolf recovery.

The wolfhound, refurbished with a rebuilt engine, made its departure from the refuge in the early hours of April 11th to begin a two day session with University of Colorado classes. The success of those classroom visits can be measured by the arrival of new volunteers here at the refuge; the spark of meeting a wolf face to face truly motivates young students to come down and assist us in achieving our goals of wild wolf recovery and caring for wolves that have to live in captivity. Many other schools and colleges in Colorado were able to meet Rami, but as usual, the Wolfhound was unable to visit every school that requested a program-clearly indicating the need for this type of educational work.

From Colorado, the bus traveled north, stopping for a night of events at the Snowbird resort in Utah. A day later we were in Boise, Idaho where Rami opened the 14th annual Interagency Wolf Conference. It was here that all those involved in wild wolf recovery come together to share ideas and strategies. Much of M:W's important networking is done throughout this annual conference, including ideas for Colorado wolf recovery.

Following the gathering, the bus again headed north to the Wolf Education & Research Center, located outside of Winchester, ID. In conjunction with the Nez Perce Indian Tribe, several schools were visited throughout the area, enabling them to learn first hand how the tribe has been the primary leader in wolf recovery efforts in central Idaho.

Leaving winter behind in the northern Rockies, the bus headed east onto the high plains of South Dakota to participate in the opening of a new administrative building for the Lower Brule Sioux Indian Tribe; it was quite a ceremony and our honor to have Rami involved with such a big event for the tribe. Several programs were conducted within the tribal schools and many wonderful connections were made to further the goals of wild wolf recovery and to put an end to wolves in captivity. From there it was a quick stop at a private ranch on the high plains to witness the recovery efforts of another wild canine-the swift fox. We all learned much about the work being done to revitalize other predator species here in the United States.

After almost an entire month of speaking with children and others, it was finally time to be heading home. Rami sensed the homecoming feeling and seemed ready for her big return to the other wolves at the refuge. A few more programs in Colorado and then we were home. Rami's tail stuck high in the air as the bus rolled in. She was ready to dominate any wolf that might think she is not the wolf with the biggest territory in the country. Back at home for the summer season, Rami teaches about being wild for those who make the journey to the refuge. Hope to see you out here sometime soon!



Rami peacefully sleeps in the early spring grass.
Photo by Tamas Brooks



Ambassador Wolves Rami and Luna meet our guests eye to eye during Mission:Wolf's annual dinner. Photo by Nelson Brooke

secretary and member of the Mission:Wolf board of directors, began by introducing and giving credit to the many staff members and volunteers who have made Mission:Wolf the place it is today. Kent Weber followed with a discussion about the issues surrounding captive wolves and the current efforts toward wild wolf recovery. Then came what everybody had been waiting for: Rami and Luna came out to greet the awe struck crowd. They gave many an opportunity to look into those soulful eyes and be kissed by a wolf, an experience that is hard to forget. The evening ended with the introduction of Levi Holt, a member of the Nez Perce tribe, traditionally known by his people as Black Beaver. Levi educated the crowd about the history of his people and the wildlife they cherish. He gave a passionate performance of the creation legend of the Nez Perce tribe. He then played his flute in honor of the wolf residents of Mission:Wolf - who accompanied him with their own voices - as well as past and present wild wolves. He left the guests and staff moved and inspired to help protect all wild creatures.

The evening was a great success and an unforgettable experience for all who attended. We must send thank-you's to everyone who participated, whether by bringing supplies and food, helping to plan and setup the event, or sharing their presence and stories with us all. Special thanks must be given to Levi Holt, his family and the Nez Perce Nation for making our recent week of education in Pueblo, Westcliffe and at our Annual Dinner such a success.

MISSION:WOLF ANNUAL DINNER

On July 28, 2002, Mission:Wolf buzzed with activity as friends and newcomers gathered for our annual dinner. The evening began with the Mission:Wolf staff giving tours to guests, allowing the wolves a chance to catch up with old friends and see some new faces. Tours were followed by a feast of shishkabobs, salad from our greenhouse, and fresh bread. As appetites were satisfied, guests and staff reminisced on past times at the refuge and talked about the future of our peaceful haven.

As twilight began to arrive, everyone moved to the top of the hill in anticipation and excitement. Sarah Woods, assistant



Levi Holt and Rami steal a few quiet moments in a long weekend of events. Photo by Nelson Brooke

NEW ARRIVALS

LUNA

Luna is one of Mission:Wolf's newest residents and was the first pup that Mission:Wolf has accepted in seven years. At only ten days old, Luna was sold for \$500 to a truck driver in Texas as an endangered Mexican Gray Wolf. A few weeks later Luna was discovered living in a bathtub in Chicago by a knowledgeable and caring woman named Marie. She offered the trucker money to rescue the pup, named her Luna, and started contacting wolf refuges.

It took us nearly a week to organize the vehicles and funds but soon two Mission:Wolf staff members, Tom and Ed, headed east to Iowa in our Subaru. Thankfully, Linda Schutt, a Chicago resident and long-time M:W supporter, transported Luna west, meeting our staff in Iowa and saving them hours of driving.

Within two days, Luna arrived at Mission:Wolf. It is unlikely that she is a true Mexican Wolf and it may be possible that she may have a small amount of dog ancestry. We may never know Luna's true wolf percentage; however, as she grows and reaches maturity, her behavior will hopefully give us a more accurate indication.

Luna has been raised by several of the M:W staff since she was only three weeks old. Due to our constant contact with her, Luna has bonded very strongly with us. She has recently joined Rami as a traveling companion and Ambassador Wolf. Luna's happy, silly, mellow demeanor easily endears her to one and all. Unlike most wolf pups, she loves to cuddle while sleeping with staff members and seems to enjoy riding in the Wolfhound on the way to and from Ambassador Wolf Program events.



Luna steals the spotlight in the Staff Kitchen.
Photo by Nelson Brooke



Raven and Magpie as they first arrived at Mission:Wolf.
Photo by Annie White

Raven and Magpie

Raven and Magpie were born on April 7, 2002, to a full British Columbian wolf father and a mother of half British Columbian and half Arctic wolf descent. Although they are believed to be pure wolves, their ancestors were sold as 98% wolf/dog and have been transported across state lines without wildlife permits. To the best of our knowledge their litter was intended for a movie project. Their two brothers are now in Utah being considered as possible filming candidates. Raven and Magpie ended up in the care of a private person in South Carolina who owned 34 other exotic animals.

Within the first three months of their life, these beautiful little girls were transported by their owner who was relocating from South Carolina to Colorado. They were placed in a temporary enclosure where it was planned they would spend the winter. However, their owner began to recognize the potential for harm and realized that he could not handle the task of caring for two wolf pups as they matured. He called Mission:Wolf to tell us about his situation and to ask if we would be able to care for them. We immediately accepted, and on Aug. 21 they arrived at the sanctuary.

Raven and Magpie spent their first few nights in the Puppy Palace getting to know the staff and acclimating to their new home. After that they were introduced to Peaches and Sabretooth as well as Rami and Luna. If they remain outgoing around visitors, Raven and Magpie may join the Ambassador Wolf Program.

Nali and Gandolf

Early in the spring of 2002, a man in Arkansas bred a white German Shepard with a wolf to produce a litter of wolf-dog crosses. He then loaded up the pups and headed off to a gun show in Colorado. At the gun show, the breeder sold two of the pups to a Broomfield, Colorado resident named Raymond.

When Raymond returned home with the pups, now named Princess Nali and Gandolf, they were already too big and independent to be set free to run around the partially fenced yard. So they were chained outside on choke collars to keep them from chewing through the leash or slipping away unexpectedly. It did not take long for the neighbors to come gawk at the pups. This only frightened Nali and Gandolf, sending them into fits of defensive fear barking. While trying to hide from the neighbors, the pups wrapped their chains around each other and a nearby porch swing, making them even more frantic to get away. With all of this going on, it did not take long for the city of Broomfield to inform Raymond that it is against the law to keep wolves or wolf-dog crosses within the city limits. He was given a week to remove the animals or they would be euthanized. Raymond was given the number of Mission:Wolf by a friend and called us immediately.

In response to Raymond's plea for help, Annie, a member of the Mission:Wolf staff, headed up north to see what we could do for these two little white pups. When she arrived, it was obvious that they were probably not the full 90% wolf they were sold as, however, their behavior was definitely wolfy. Between the choke chains, unfenced yard, nearby neighbors and fear barking, Annie knew that Nali and Gandolf needed a new home. Thankfully, Raymond realized that Nali and Gandolf did not belong living on chains in the city. He wanted to make sure that his pups were given the best life they could have, so he loaded them into the back seat of Annie's truck and she headed down the road, back toward the refuge.

Since arriving at Mission:Wolf, Nali and Gandolf have adjusted to their new home well. Though still skittish around strangers and frightened of fast movements, they are beginning to settle in and bond with the staff. As the days go by, their soulful yellow eyes peer out of their enclosure onto the Sangre de Cristo mountains in the distance, and we know that they have finally found a peaceful place in which to live.



Nali and Gandolf lounge in the Puppy Palace. Photo by Annie White



Saidee smiles at the camera as she and Rogue enjoy a sunny afternoon together.
Photo by Vendy Hubackova.

SAIDEE

In October 2001, Saidee became our first new adult canine in six years. She is a wolf-dog cross who was possibly bred and sold in Oregon. She passed through various homes, some possibly abusive, until she came to us at 10 months of age from a couple in Colorado City. The lady who was caring for Saidee claimed that she had in turn taken Saidee in from a Siberian Huskie rescue organization. Due to her shy nature and extreme fear of men in general they decided that Saidee must be part wolf, and consequently destroyed as per their bylaws. Saidee's new human was able to convince the organization that she deserved another chance and ended up bringing her home. Saidee bonded easily with women and had even begun to bond with the man of the house, yet they felt that they could no longer care for her properly due to the unexpected arrival of a infant.

Although the staff at Mission:Wolf feel that Saidee has little, if any, wolf content, she has become a close companion to Rogue, a seven-year-old wolf-dog cross. Rogue, who had been without a mate for years, was overjoyed to finally have companionship. Rogue had become slightly overweight after years of having no competition at feeding time, but shortly lost all of his excess weight since Saidee kept stealing his food. Saidee, who initially was frightened of the staff, became quite brave by following Rogue's example. For the past few months, Rogue and Saidee's relationship has been peaceful and they seem to be on their way to becoming one of the more bonded pairs at Mission:Wolf. Saidee has reminded us that there is still much confusion about what exactly is a wolf, wolf-dog cross or a regular, ol' dog.

SUSTAINABLE LIVING AT MISSION:WOLF

The wolf is a symbol for all that is free and wild. Wild wolves once inhabited the entire North American continent. Today, they occupy less than 5% of their original territory. Sustainable living is a lifestyle geared towards harmonious interaction with the natural world. Through designing human habitats that are respectful of nature, people will lead a way of life that enhances and restores nature. Then we will all contribute to the return of the wolf!

Necessity is the mother of invention, as proven true at the Mission:Wolf sanctuary and education center. Due to our remote location, we have had the need to design and implement the basic systems of operations: water, electricity, heating, food production and waste disposal. These systems have been designed to contribute to the health and vitality of our natural surroundings. Healthy local environments are the backbone for a healthy planet.

THE MISSION:WOLF VILLAGE

It started with a tent and a big fence. As more people heard of our work the fences grew at enormous rates when compared to the human shelters. Even a federal inspector commented how unusual it was to come to a place that consisted of acres of fences for wolves but no structures for humans. Although this seemed odd to many, it was obvious by the waggy-tailed wolves that our goal to create a happy refuge for captive wolves was a success.

As years pass and demands grow we hold on to a simple set of priorities - wolves first, education second and business needs last. Today, inspectors and visitors comment on how peaceful and content the wolves are in comparison to other places where the facility was created as a business. People who develop elaborate plans, solicit millions of dollars often end up with stressed animals and disappointed guests.

Today, with the wolves' needs satisfied we are finally expending energy to complete our humble village for volunteers and visitors. Each building at the refuge was created to satisfy a need. First came a '56 trailer house with a tiny kitchen and a tipi to replace the tent. As more people arrived we created the Visitor Building to accommodate public demand. Then came the Veterinary building to shelter young puppies and store emergency supplies. As tools became more plentiful a tool shop evolved. To shelter summer staff we

Since he was a yearling, Druid has been curious about the strange human activities in the M:W village. Photo by Tracy Ane Brooks

erected more tipis and built a couple of small cabins. The last structure planned is the community building. This will house restrooms for both staff and visitors (goodbye smelly outhouse!) and provide the staff a large efficient kitchen and a greenhouse.

As the Mission:Wolf family grows we keep our footprint on the land minimal. In the end, the refuge itself will occupy fifty fenced acres of wolf habitat that overlooks a small three acre solar and wind powered village. All completed buildings have been created from recycled materials and volunteer labor. The remaining land will be placed in a trust to enhance wildlife conservation.

"GENE'S KITCHEN"

Construction of the new community kitchen and bath started in 1998. The foundation, along with septic system and a solar water well, is complete. Priorities shifted and for the last two years we have been occupied with more important projects relating to geriatric wolf care. Just as we were gearing up to use the bits and pieces of old wood collected over the years to build the main structure, we were notified we were to be included as a benefactor of Eugene's estate. It was quickly decided that we would name the Community Building in his memory. Instead of piecing it together over many years with our aging wood pile, we have revamped the design to create a solid and sustainable building. We are finalizing details and anticipate erecting the main structure in 2003. When complete, the building will include Mission:Wolf's first flush toilet with a year round shower and bath! Inside will be a much more spacious kitchen than the current one the staff has crowded into for 15 years. The kitchen will not only be a place for staff to cook meals, but it will also serve as a place for staff to eat at a community table. Attached to the front will be a greenhouse where fresh vegetables can be grown year round. The community building may take us another year or more to complete. This wolf-head shaped building will signal the completion of a dream come true: a sustainable facility that operates with minimal resources.



Eugene S. Principe Jr.

Guinness is a gray wolf who lives at Mission:Wolf. As a pup he traveled across the country with the Ambassador Wolf Program educating thousands about wolves. In 1997 Guinness and the wolf program made several presentations in New York including a live appearance on the NBC Today Show. Along our journey through New York City we met an animal-loving fellow named Eugene S. Principe Jr..

Sadly, Gene passed away on February 9th, 2000. However the impact that Guinness and the wolf program left on Gene will be felt at Mission:Wolf for a long time. Gene had a great value for wildlife education and believed in our program so much he placed M:W in his will. Gene's awesome generosity has allowed us to realize many of our goals in a single year. As many of you know we have operated the refuge on nickels and dimes (literally), you can only imagine how excited we were to receive a gift like this.

In honor of our gift from Eugene S. Principe Jr. we are establishing three projects that will live on for years to come.

- Eugene S. Principe Jr. Wolf Endowment Fund

This fund will provide future money to assure for the continued operation of the refuge and support wildlife education.

- Eugene S. Principe Jr. Community Building

A 1500 sf., three level, passive solar log and masonry structure that features: a wind and solar powered electrical system, radiant floor heat, a greenhouse, visitor bathroom and a community kitchen with sleeping loft.

- Eugene S. Principe Jr. Wolf Playground

A 20-acre fenced habitat to be used as an exercise area for wolves living at Mission:Wolf. This will not only provide the wolves a new habitat but will offer visitors, photographers and biologists new opportunities.

The Staff and Directors of Mission:Wolf are all very grateful for Eugene's gift. We invite you to come visit and help us build the wolf enclosure and community building this year.

AN ANIMAL LOVER AT HEART

Eugene lived in New York City and was known as a kind, loving, gentle and generous person. He spent much of his time helping those less fortunate, both animal and human. He was nominated to be named Volunteer of the Year by the Mayor's office of New York. If it can be said that it is animals that make us human, then certainly Eugene's legacy to them demonstrates a monumental humanity.

M:W VILLAGE INCLUDES:

- 15 Individual Wolf Enclosures
- Two Wolf Playground Enclosures
- Visitor's Center
- Community Kitchen/bath
- Tool Shop
- Veterinary Building
- Two Tiny Staff Cabins
- Greenhouse
- Camping Area
- 3 Tipis
- 150 acre nature center

SALVAGED BEAUTY

Living in a throw-away society provides abundant reusable material. The refuge's buildings are mainly comprised of salvaged materials.

WATER CONSERVATION

A natural spring at the top of the aspen grove provides the wolves with water. A solar powered well pump provides fresh water to a storage tank., gravity delivers it to the staff and visitors. Rooftop gutters collect water for garden's and landscape

RENEWABLE ENERGY

Solar panels and a wind generators provide electricity for office, toolshop and household energy use. These products are readily available and can set you free from rising energy bills. Many thanks to Solar Solutions of Silver Cliff, Colorado for all of their help in setting up the refuge solar system.

GENE'S PLAYPEN

The largest enclosure at Mission:Wolf will encompass nearly 20 acres and will provide the resident wolves a great place to run and chase rabbits. It may take another two or three years to complete depending on how many people come to build it this year.

BUY TO RECYCLE

At M:W we recycle plastic, glass, paper, cardboard, aluminum, batteries, and many other products - about 80% of our solid waste. Simply by shopping selectively for items that are recyclable in your community you can tremendously reduce toxic landfill dumps.

YELLOWSTONE PEACHES

GREENHOUSE

With earthberms, thermal mass and planned solar orientation, only 200 square feet of growing space in the greenhouse provides salad greens and other produce from early spring through late fall.

COMPOST

Kitchen food scraps are layered with yard clippings in our compost pile to decompose, making excellent garden soil, while substantially reducing solid waste.

For more information on how to live in balance with the natural world and product availability contact:

SOLAR SOLUTIONS LTD.

812 Main St., Silver Cliff, Co 81249
Phone: 719-783-9666
Web Site: solarsolutions.com

JADE MOUNTAIN

P.O. Box 4616, Boulder, Co 80306
303-449-6601 info@jademountain.com
Website: jademountain.com

REAL GOODS

966 Mazzoni St., Ukiah, Ca 95482
(P)707-468-9214 (F) 707-468-0301

BLACK MESA PERMACULTURE PROJECT

P.O. Box 26195, Tucson, Az 85726
(P) 602-745-7875x-24 (F) 602-745-7888



A view of the Mission:Wolf village, including the tool shop, a tipi and the Wolfhound. Photo by Nelson Brooke



Photo by Annie White

MEMORIALS TO WOLF LOVING PEOPLE

The Mission:Wolf refuge has become a symbol of wolves and nature. More so it is a place where a single individual can make a difference. Over the years hundreds of people, some with little resource or knowledge have appeared in our driveway asking what they can do to help? For many what started as a short visit ended up weeks later involved in a project they could never have imagined. The sense of purpose offered by helping animals produces a euphoric feeling of pride and satisfaction.

The result of these individual projects is now a beautiful sanctuary for wolves and a hands-on education center for people. The motivation to many volunteers and visitors is the chance to greet and bond with a resident wolf. For many people this brief but passionate encounter leaves lifelong memories.

It is a true blessing and a gift of reassurance when a person who we meet along our path believes in our work so much that they send us support even after they die. For many the experience of meeting a wolf face to face is one that lasts a lifetime. The following individuals are greatly missed by their families and the staff at Mission:Wolf. We send our prayers and gratitude.

<i>John and Carol Barnett</i>	<i>Esther Gillett</i>	<i>Eugene S. Principe Jr.</i>
<i>CJ Butcher</i>	<i>Wanda Gorski</i>	<i>Carol Ragan</i>
<i>James N Cost</i>	<i>Jacqueline Greber</i>	<i>Taylor Brandon</i>
<i>Joseph Chrznowski</i>	<i>Weston Griffiths</i>	<i>Schaeffer</i>
<i>Carol Daniel</i>	<i>Dr. Dave Leighninger</i>	<i>Marilyn Spink</i>
<i>Matthew DeMara</i>	<i>Jennifer Jacques</i>	<i>John Williams</i>
<i>Ginny Fleming</i>	<i>Douglas Phillips</i>	

Mission:Wolf is designed to embrace sustainability and solar power so that the refuge will thrive for decades to come. To assure that there will always be people in the future to operate the refuge and in honor of a committed nature lover, Mission:Wolf is pleased to announce the creation of the Eugene S. Principe Jr. Wolf Education Fund. This fund is set up as an endowment that will help sustain the refuge for years to come. If you are interested in contributing to our endowment or wish to place the wolves in your will please contact M:W.



Our new Community Building has come a long, long way in the past couple of years! Photo by Annie White



THE CULINARY WOLF

WRITTEN BY TRACY ANE BROOKS COPYRIGHT 2002



The following recipes and food ideas are the product of over a decade of experience providing the canine residents of Mission:Wolf a healthy and satisfying diet. The wolves eat a basic raw meat diet consisting of elk, deer, bison, cow and horse. In addition they receive nutritional supplements known as "tooth balls" For years I have experimented on my own, making good quality food for many wolves with different needs. I have spent countless hours studying canine nutrition and I continue to do so. These different meal ideas have been developed to suit the specific and changing dietary needs of canines from pups to geriatrics. My experience supports the idea that domestic dogs benefit greatly, living a longer and healthier life when we cook them good quality homemade foods, especially when meals are prepared with love.

INGREDIENT LIST

MEATS AND SUCH

Bison, Beef, Chicken, Duck, Lamb, Elk, Venison, Turkey, cooked canned Salmon, Organ parts (such as Heart, Liver and Gizzard), Goat Milk, Eggs, Cottage Cheese, Yogurt

GRAINS

Puppies-Human baby cereals such as rice, high protein or oats.
Regular- Brown or White Rice, Oats, Millet or Barley. Flax Seed Meal.

VEGETABLES

Squash, Broccoli, Carrots, Potatoes, Pumpkin, Peas, Garlic.

OILS FOR COOKING AND ENHANCING MEALS

-**Olive** for cooking.
-**Safflower** for cooking.
-**Flax seed** oil for enhancement of the meal. This adds omegas (or fatty acids) and helps with bowel movements. Good for all ages. Seniors can especially benefit.
-**Cod liver** oil for enhancement of the meal also adds omegas. (No need to use flax and Cod. One or the other depending on your animals' needs)



Artwork by Tracy Ane Brooks

HOMEMADE PET FOOD

Many people find it easy to feed their pets table scraps and other convenient foods. Most of these foods are inappropriate for canines since they often include white flour and sugar. Bread can make it easy for a dog to gain weight and hard to shed that weight. Sugar, chocolate and onions are not good foods to feed your pets potentially causing sickness and in extreme cases death. If you choose to purchase packaged pet food consider buying good quality, high protein, meat based canine foods.

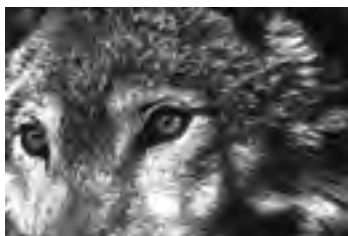
COOKING HINTS

Always try to cook in cast iron skillets to add extra Iron.

"TOOTH BALLS" SUPPLEMENTAL TREATS

A supplemental treat given to pets on a daily basis may enhance their overall health and balance nutritional deficiencies. This mixture started as a remedy for a skin problem that bothered Sabretooth for years. These treats, "tooth balls", are named in his honor. Create your own name for this special treat to fit your dog's personality.

- Ground meat
- Canned Salmon
- Omega 3-6-9 oil in flax or deep sea fish formulas
- Vitamin C Multi vitamin
- Trace colloidal mineral
- Calcium, bone meal
- Eggs
- Oats
- Glucosamine, Msm,
- Chondroitin (separately for best absorption)



THE CULINARY WOLF USES GOOD QUALITY, HIGH PROTEIN, NUTRIENT RICH FOODS AND SUPPLEMENTS. SHE FEEDS MANY WOLVES, WOLF DOGS AND DOGS.

SENIOR DIETS

Feeding older dogs dry dog food can be hard on their kidneys; I have had good luck feeding dry food that has been soaked in hot water or broth. Try a diet of mostly soft, easily digestible foods like fish (no bones), cooked chicken, other meats, and scrambled eggs.

Bone-type chews are important to animals like Shaman who have a strong need to chew. He gets knuckle and shank bones often.



Feeding other creatures unknowingly! Mission:Wolf has a full supply of ravens, chipmunks, squirrels, magpies and jays who sneak away with the wolves food! Occasionally eagles and hawks dine too! Photo by Tracy Ane Brooks

BASIC PUPPY INGREDIENTS

Combine and cook together -
Meat
Rice or other Grains
Vegetables
Cooking Oil
A pinch of Mineral Sea Salt
Scrambled Eggs _

BOTTLE FORMULA AND BOWL FED

GRUEL CEREAL

- Goat Milk
- Rice cereal, High Protein cereal
- Pureed cooked meats -
Chicken, Turkey, Lamb or Beef
- Broth from cooked meats
- Scrambled or Hard Boiled Egg
- Supplements and Vitamins

WARM WINTER STEW

Serving for one 100 lb canine,
use 1 to 2 cups meat chunks, 1 to 2
TBSP cooking oil, 1 or 2 cloves gar-
lic, vegetables, water

FISH STEW

SAME AS WINTER STEW, EXCEPT OPEN
A CAN OF COOKED SALMON OR OTHER
FISH, AND ADD WHEN THE VEGGIES ARE
COOKED AND THE STEW IS DONE.
COOL AND FEED.

SUMMER COOLING TREATS

Ice cubes and frozen meat pieces
make good cooling treats.
Put a meat piece or other favorite
treat in an ice cube, add water or
broth and freeze.

WATERMELON AND OTHER FRUIT

Many canines love watermelon and
some enjoy cantelope and
honey-dew melons.

RECIPES FOR THE YOUNG AND OLD

Sila's Favorite A chinese style meal

Traveling Ambassador Wolf Sila lived
a rich life filled with traveling and explor-
ing places the average wolf would never
encounter. One of her favorite treats was
when we stopped for dinner at a Chinese
restaurant. I quickly learned that when I
brought her a chicken and vegetable dish
she would frantically gobble it as fast as any
raw meat! At home I created my own version
of this Chinese classic that she thoroughly
enjoyed.

Simply cook together -
Chicken, broth, garlic, olive oil, carrots,
broccoli, peas and serve over rice.

Dancing Bear

Dancing Bear, at a ripe age of thirteen
years, is doing well on a special diet I created
to help her dramatic seasonal allergies. For
years she has scratched herself frantically.
All traditional vet remedies provide little to
no relief. Through extensive and expensive
testing we learned that she has chronic
allergies to almost every thing in her environ-
ment (to name a few - most molds, common
weeds , insects like house flies, foods such
as milk, eggs, turkey, wheat, and chicken).
The foods she is not allergic to include rice,
venison, beef, lamb, fish and potato. Bear's
new diet has resulted in dramatic changes in
her attitude as well as her itchy allergies.

RAW MEAT VS. COOKED MEAT

Many questions arise concerning
whether it is good or bad to feed dogs
raw meat and bones. Many horror sto-
ries exist about splintered bones chok-
ing dogs. For wolves, it is easy for them
to eat and digest raw meat, bones and
hide. For example, when chicken is raw
and uncooked, the bones contain mois-
ture which makes them soft and pliable.
However, when chicken is cooked, the
bones become dry, brittle and will break
into sharp splinters that may choke
an animal. Be certain to avoid feeding
cooked bones. Raw bones are not only
healthy and enjoyable but provide your
canine with the best natural toothbrush
you can find.

Two of the benefits to feeding raw
meat that people enjoy is: one, the
bones provide a safe and satisfying
way of using jaw strength (rather than
chewing couches, shoes...), and two,
the wolves' breath is actually fresh and
clean, not nasty smelling like many
dogs who eat commercial prepack-
aged dog food. For people who want to
feed their dogs raw meat, incorporate it
slowly into mature dogs' diets. Starting
a dog out with raw meat as a puppy is
probably best; I recommend consulting
a vet like Dr. Rob Silver in Boulder, CO
before making drastic diet changes. A
varied diet is always best. If your dog
has never eaten raw meat, start by lightly
cooking it first. Add cooked fish with rice
and/or vegetables to your existing dog
food. Your dogs will be very grateful and
feel well taken care of and loved.

THE CRIMZON FUND

Mission:Wolf is reaching maturity as an orga-
nization, and so are many of our resident wolf
friends. Currently over 60% of our residents are
considered geriatrics at 8 years of age or older.

Beyond this age we experience a significant need for increased diet changes and medical care.

Many veterinarians provide outstanding care for our wolves. Dr. William Hancock has repeatedly donated his time and clinic for the care of many wolves. In fact, when Crimzon was diagnosed with diabetes and was in need of insulin, Dr. Hancock rushed in his own car to meet us halfway between the refuge and the vet office.

While most of our veterinarians donate a portion of the cost of the various surgeries, drugs and office time, they can not reasonably be expected to provide these services for free. A typical surgery costs between \$1,000 and \$3,000; each year we find ourselves in the waiting room two or three times. Less dramatic vet runs can easily cost from \$200 to \$500, depending on what the problem is and what follow-up treatment is required.

With the increased need for more vet services, we see the need to create a fund for the sole purpose of paying veterinary bills. Contributions of cash and medical supplies will be dispersed from a fund established in the honor of Crimzon. The Crimzon Fund is to be used for the future care of all wolves living at M:W.



Crimzon and her brother Navarre.
Photo by Monty Sloan

The Crimzon Fund Wish List

Most helpful - cash donations payable to Mission:Wolf for the Crimzon Fund.

We seem to always be in the need of many vet supplies including: lactated ringers, bandages, rubbing alcohol, peroxide, beta-dine, mineral oil, stretchers, steel wolf proof traveling kennels, X-L Airline dog carriers, canned good quality dog food such as Science Diet or Iams for senior dogs, glucosamine, dart gun supplies (please call M:W for specifics), and rubber gloves.

Saying Goodbye



Mera warily observes visitors from her hilltop perch.
Photo by Annie White

Mera and Ballazar

Since our last newsletter we have lost many of our friends. Two of the most memorable were Mera and Ballazar. In the seven years that they lived together, they formed one of the strongest bonds we have ever seen between wolves.

Mera was a female gray wolf who was born in 1986, in the backyard of a private home near Denver, CO. Her story begins with that of her parents... Mera's parents were born at a roadside zoo in a circus cage and sold as "family pets" to people living in a high-rise apartment in downtown Denver. There they lived for a few months before the owners decided they were too destructive, after the stressed wolves ate their way through a wall. Four years and four owners later, they were two very neurotic wolves trapped in a cage, trusting no one. Their next owner realized that these abused wolves did not belong in the city, and were moved into his country backyard, where they produced two litters of pups. Coming to Mission:Wolf when she was only 13 days old, Mera far outlived most of her littermates, who were all sold as pets from a classified ad.

By this point, her parents' distrust of humans was so strong that puppy Mera displayed similar behavior even though she was hand raised in a peaceful environment. After seven years at the refuge, Mera remained high strung, needing a large private enclosure and limited exposure to people. Over

time we offered her several canine companions. She played with some, beat others up, and basically seemed discontent with our choices. However, in 1994, Mera met Ballazar, a large movie star gray wolf, for the first time and her life changed forever.

Ballazar was an eastern gray wolf, born in a Minnesota zoo in 1989. For two years, he was part of an educational exhibit at the International Wolf Center in Ely, MN. A film producer, Jim Dutcher, working on a wolf documentary, arranged to have Ballazar transferred to Idaho where he was placed with an adult female wolf and several unrelated pups. Hopes were high to film the newly formed "pack" along with the mating and birthing of wolf pups. It took only a short time to realize that Ballazar did not bond with his new girlfriend. The next year, Ballazar challenged the filmmaker and forced him out of the enclosure, not letting him return. This was the end of Ballazar's short-lived acting career, though he was still featured as the alpha male (a.k.a. Akai) in the film "Wolf: Return of a Legend." The filmmaker then asked us to take in Ballazar, and we agreed.

We traveled 100 miles to the airport where we received a very delirious and heavily sedated Ballazar. He had been sedated for nearly twelve hours and had a wolf hangover that lasted for several days. His recovery from the tranquilizers was slow, and he suffered much stress from the drugs and the sudden move. He was depressed and upset about being removed from the movie project and the wolf family he had known there. He showed severe aggression toward his proposed mate, Mera. Within four months Ballazar was a pacing basket case, afraid of everything and aggressive if people came too close. He started to chew himself in fits of anxiety, resulting in a hole the size of a baseball in his leg. The veterinarian recommended we euthanize him.

When mating season started that winter, a new attitude took over the refuge. Soon Ballazar was found fence to fence, wagging his tail happily at Mera. These two became the flirts of the refuge, with Ballazar so distracted by showing off for Mera that he forgot to chew on his legs and the wounds began to heal. After only a short time, he was downright demanding to be let in with Mera. When the day finally came to open the gate between them, the happiness he expressed as he bounded up the hill with her by his side reassured us all that the stress, pain and sadness everyone had endured was worth it. Ballazar received a vasectomy and the following season they both mated for the first time in their lives. For the rest of their lives together, they were never seen far apart. With Ballazar by her side, the extremely shy Mera started to come out of her shell and would occasionally walk up to the fence to sniff a visitor or receive attention from the staff.

On the morning of March 6, 2001, staff members found Ballazar unable to stand. He was rushed to the veterinarian in Colorado Springs where he passed away on the operating table of heart failure at the age of twelve. Mera lived for five more months and reached the ripe old age of 15. After the death of her beloved mate, she slowly went downhill until she passed away quietly on the evening of August 26, 2001. Of all the pairs we have had at Mission:Wolf over the years, these two will always be remembered for their incredibly tight bond and the affection they always shared with each other.



Ballazar whiles away another long, hot summer afternoon.
Photo by friend of Mission:Wolf

To Friends

Haida and Hopi

Haida and Hopi were two of Mission:Wolf's most beloved wolf-dog crosses. They spent years living happily together, sharing their wisdom and kind natures with staff and visitor alike.

Haida was a white and black wolf-dog cross who lived at Mission:Wolf her entire life. It all began on an early spring morning in 1987 when Cyndar gave birth to Hota's pups in one of the refuge's enclosures. Haida was the only one of four pups to survive due to a mastitis infection which caused her mother's milk to dry up. The early years of her life were spent pulling the Mission:Wolf sled and playing with her hybrid pack in the staff kitchen. As Haida matured, she grew into a very friendly and outgoing canine, but was by no means tame or domestic. Staff fondly remember the days when she lived in the Puppy Palace (our Vet building) - always finding trouble to get into. Haida would climb up on the counters, despite her age and arthritis, to pull open the cabinets, tear open food bins and shred blankets of all sizes. This sweet natured wolf-dog was devoted to her companion, Hopi.

Hopi, a.k.a. Toad, was born at Mission:Wolf to Crimzon and Lakoda in 1988. His litter was the accidental result of inadequate fencing. The separation fence was not strong enough to keep Lakoda from digging in to mate with Crimzon on that fateful January morning. Growing up at the refuge, Hopi was always the omega (lowest ranking) of the "Hybrid Pack" but managed to maintain his happy-go-lucky nature. His distinctive markings caused many people to believe that he was part Rottweiler or German Shepard, but in fact, Hopi was one quarter wolf and three quarters malamute. Tan spots above his eyes always added a special expressiveness to Hopi's face. Although he always liked to bark and growl at people when food was around, Hopi was very friendly to one and all.

As they began to age, Hopi and Haida's ability to climb the steep hills in their enclosure deteriorated. In a necessary decision, Haida was moved up to the Puppy Palace to receive special attention from the staff. In the mean time, Hopi was left in his enclosure with a new canine companion. However, Haida was miserable; she liked all of the additional attention, but she missed Hopi. Once Hopi joined her in the small enclosure, they were as happy as could be. When they were young, Hopi and Haida formed a strong bond with each other that lasted their entire lives.

Haida was particular about the people she let into her life. However, once she decided to give her heart, you received all of it. Toward the end of her life, Haida would fall asleep with her head in the lap of a close friend and begin to dream. It was always an honor to realize that she trusted you enough to let down her guard. Visitors and staff alike would watch her prance up to the fence whenever food was around with a smile on her face.



Hopi truly enjoyed basking in the warm sun.
Photo by friend of Mission:Wolf



Haida striking a regal pose in her later years.
Photo by friend of Mission:Wolf

On August 17, 2001, Haida Potato, as she was called, passed away due to natural causes. Haida's soulful eyes, wild spirit and quiet howl will always be remembered.

Hopi survived his beloved mate by nearly a year. He fought off the pain and frustration of losing one of his front legs to bone cancer and continued to smile whenever anyone would pass. While it is often very difficult for such an old animal to recover from major surgery, Hopi's strength and perseverance was a testament to the incredible will and resilience of his species. Even with only three legs, Hopi would still tear the staff kitchen apart whenever we brought him inside for some extra attention. Beating all odds, Hopi survived until June 10, 2002, when he was tearfully relieved from his pain by his friends at Mission:Wolf. That evening, Hopi's spirit rose above the refuge and we know he is still looking down on us from the wild ridge above.



Haida and Hopi slept close to one another for comfort and companionship.
Photo by friend of Mission:Wolf



Uncle Bowdi poses for "Wisdom"
Photo by Kent Weber

Uncle Bowdi

In the Spring of 1992, Mission:Wolf received a call from a Montana wolf breeder about rescuing three pups that were to be euthanized if no home was found. Hearing the plight of these animals, Mission:Wolf staff pooled their personal funds for gas money and food. Two dedicated volunteers then set off for Montana the next day. They returned to the refuge with three timid black puppies who had brilliant wild eyes. The two females were named Hina and Jazmine, while the little boy with a bright white patch on his chest became known as Bowdi.

Bowdi soon grew to be the largest wolf living at the refuge, at 142 lbs. Although his body was huge, he still had the attitude of a puppy. He was a bit clumsy, yet had such enormous strength that he could be quite intimidating. As a yearling he towered above the other wolves and took advantage of his size during dinner time. Otherwise, Bowdi remained one of the most fun loving, playful and carefree wolves to live at Mission:Wolf.

In 1993, Bowdi's sister Jazmine gave birth to a litter of pups. All of the adult wolves in the pack would jump up, scold the pups and run away, opting for peace and quiet, whenever the four youngsters got out of control. However, "Uncle" Bowdi put up with the constant barrage of energy from his four nieces and nephew, exhibiting inexhaustible patience. For hours he would put up with the obnoxious roughhousing of the wild pups, as they made him whimper while tugging on his ears, cheeks and tail. He just laid there, his eyes peering out as if to say "Why me?" while the pups played and practiced their chewing skills.

Uncle Bowdi spent many a year overlooking the refuge from his rocky outcrop with Jazmine. While he always remained shy around strangers, he is featured in the photograph "Wisdom" taken by Kent Weber. He passed away in May 2001 from natural causes, leaving behind many fond memories of a big wolf with an even bigger heart.

Passion

Passion was born in 1992 to be a part of the same film documentary as Ballazar. When Ballazar and his female companion never bonded and failed to have pups, the filmmaker ordered two litters from a nearby game farm. Between the two litters, there were 11 wolf pups, but he only had use for 8 of them. Passion and her brother, Sabretooth, along with Peaches, came to live at Mission:Wolf just three weeks after they were born.

Rocky Mountain Passion was named for her full-of-life-and-adventure personality. When she was young, Passion was an Ambassador Wolf for a short time. Although she was fearless while traveling and around people, she was so independent that she would throw snapping, snarling fits if not allowed to do everything she wanted. At the age of three, Passion decided to challenge Sila, the alpha female of the traveling Ambassador group. Passion, at 65 pounds, would take a headlong run at Sila and bounce off the 105 pound female. At first Sila just ignored the fiery Passion, but soon she got tired of the challenges and chased Passion onto the roof of the staff cabin, holding her there for days. We knew it was time to separate them. Passion retired from traveling and moved in with her mate and constant companion, Guinness.

She lived out the rest of her life in a large enclosure next to the Visitor's Center with Guinness. Passion adored people, but her jealous, overbearing companion found himself threatened by any human that gave her the attention she solicited. This always resulted in the fiery little Passion charging Guinness and chasing him away from the people so she could continue enjoying the attention. She was by far one of the most

vocal wolves at the refuge, each time adding her unique voice to the howling and carryings-on of Mission:Wolf's residents. Passion was also known for her propensity to climb trees. One sunny summer afternoon a staff member walked out onto the back porch of the Visitor's Center and began looking for Guinness and Passion. Guinness was easy to find lying under his favorite tree, but Passion was nowhere to be seen. With a sinking feeling that she had somehow escaped, Josh scanned the enclosure for possible escape routes and saw movement in a tree. At first he thought it was a raven, but looking closer, he saw two wolf eyes staring down at him. There was Passion, perched on a branch 20 feet up a ponderosa pine. This passionate little wolf, who always kept the staff and Guinness on our toes, was a perpetual light and always brought a smile to the faces of young and old. On June 30, 2002 Passion passed away from cancer in her own aspen grove, surrounded by the people who loved and cherished her friendship.



Passion always kept a close eye on Guinness, even during the coldest of days. Photo by Gary Crandall

COLOR ME WILD!

*Baby Luna romps in the spring flowers.
With eyes like butterflies, she pauses just long enough
to inspire you to color in the precious scene.*



ORIGINAL ARTWORK BY TRACY ANE BROOKS

WOLF CARETAKER OF THE YEAR

Dave and Julie Kreutzer

In each issue of Wolf Visions we look back and attempt to identify the people that make the greatest gestures towards supporting the long term vision of Mission:Wolf. Obviously this title is deserved by many and often causes the staff much deliberating over who will be selected. Since our last newsletter the refuge has grown in many ways. Without the dedication and support of two very special people we could never have achieved the amazing results that we have in the last year. The staff of Mission:Wolf is honored to bestow the title of Wolf Caretakers of the Year to Dave and Julie Kreutzer.

The Kreutzers have volunteered countless hours of time for over a decade at the refuge. Often visitors find Dave busy building or repairing something outside and Julie busy inside preparing a scrumptious meal and dessert for the staff. Besides their constant work at the refuge a few of their other achievements include securing the donation of six vehicles, several hand and power tools, wolf transport kennels, wolf feeding supplies, chain-saw repairs, fire extinguisher refills and countless other items. In their spare time back at the legal offices of Dave and Julie Kreutzer Esquire they have managed to help M:W establish land conservation easements, land sale transfers, volunteer guides and liability releases, an educational endowment, dissolution statements and numerous other time consuming legal projects.

Dave and Julie are appreciated and loved by everyone at Mission:Wolf. Their dedication and attention to detail have greatly contributed to the long term success of the Mission:Wolf Refuge.

Thank you for everything Dave, Julie and Bruce!



Julie, Dave and Bruce spend the day with little Luna.
Photo by Stacie Sonnenshein

THANK YOU!

We want to thank all the people who have gone far out of their way to help us further our mission. There are many more of you than we can possibly name; you know who you are and we trust you know how much we appreciate what you do. Mission: Wolf could not accomplish what it does without the support it gets. We send our heart-felt gratitude to our new and old wolfdaretakers who provide more than just food for the wolves, and to all of our volunteers and SCI camps who have put so much effort into our endless projects. A special thanks to those who provide the financial means that allow those projects to be realities. The continual generosity that Mission:Wolf receives reminds us that people truly care about wolves and wildlife.

We would like to thank the following people for their generosity: Valerie Mitchell, Simone Ham, Jim and Betty Hammerbeck, Sundee and Robert, Robert Keller, Brooksie Remple, Debbie Evans, the McCrea family, Mark Humble, the Brooke family, and Rodger and Jane Hanson.

Feeding Time Thanks

Feeding forty mouths is no small task, especially when those mouths belong to hungry wolves. The support given by many individual people and organizations make high-nutrition and low-cost feedings a reality at Mission:Wolf.

The following have willingly donated much time, effort, and resources to our hungry residents:

BEAR BASIN RANCH, LEROY BERNACKI,
GREG CURTIS FAMILY, THE FRANK FAMILY,
DEAN DRAKE, GEORGE FLETCHER,
DEVON TAYLOR, THE GOMEZ'S,
GORDON AND KEVIN OFF, JIM OLDENDORF ,
FRANK AND PAT OF WOLF!,
RED BIRD FARMS, JERRY SEIFERT
CHUCK @ HERMIT ENTERPRISES,
JENNINGS MARKET, ZAPATA RANCH
AND ALL THE WONDERFUL LOCAL RANCHERS AND
OTHER GENEROUS PEOPLE IN THE HUERFANO AND
WET MOUNTAIN VALLEYS WHO HAVE DONATED MEAT
OVER THE YEARS.

Chronic Wasting Disease, Elk and Mission:Wolf

In the national news a lot of attention has been given to Chronic Wasting Disease (CWD), a disease similar to mad cow disease that can be lethal to deer and elk. The effect of this disease on elk ranchers has been devastating in some circumstances. Local ranchers Jerry Seifert and Jim Oldendorf were struck by some particularly bad fortune and both were searching for ways to get rid of their elk herds.

In fall 2001, Jerry Seifert came to Mission:Wolf with a proposition. The market value of his elk had fallen and he was looking for a way to go out of business. He offered to donate one elk a week to feed the wolves in return for a tax write off. In the end, he will have donated almost 70 animals to feed the wolves. Jim Oldendorf donated his herd of seven elk to Mission:Wolf. At this time, there is no reason to believe that even elk meat containing CWD would harm wolves.

We are hopeful in the future that when wild wolves return to Colorado they will be able to play a role in controlling CWD in wild deer and elk populations, as wolves will single out the weaker members of a herd. Restoring the wolf might reduce CWD in the state of Colorado to the benefit of the deer, elk, and hunters.

Transportation Donations

Traveling over 15 miles of dirt road to go just about anywhere can be hard on the M:W vehicles. We are always looking for dependable, fuel efficient 4x4s.

In regards to refuge transportation, as usual we thank Rick Derr and the folks at Burt's Auto Dealers in Denver who continue to support the refuge with reliable work trucks at reasonable prices.

We thank director David Kreutzer for recruiting friends to donate their retired vehicles to M:W. A huge thanks goes to Paul Heller of Boulder for offering M:W his roadworthy 4x4 Nissan Pathfinder. The Pathfinder has been useful as a wolf ambulance for various veterinary emergencies. We also thank Jeremy Kaplan of Boulder for donating a 4x4 Subaru Legacy Wagon which provides us with a reliable, fuel efficient vehicle to take on town runs and was used for a trip by M:W staff to pick up baby Luna in Iowa.

Tribute to Mission:Wolf Alumni

The staff who live at Mission:Wolf become part of an extended family best described as our Alumni. For years many volunteers who plan a two week stay end up at the refuge for a month and for some it may last years. There are two individuals who are deserving of much respect and appreciation for their outstanding commitment to the wolves of Mission:Wolf.

Tom Zieber and Josh Beck have both witnessed the growth of not only the refuge but have also raised and bonded with many of the wolves. In recent time, Tom served as our Animal Caretaker and Josh fulfilled the duties of Refuge Manager. They have both traveled with the Ambassador wolf program from coast to coast and have been involved in the return of wolves to the northwest U.S..

As a Wolf Caretaker, Tom adeptly handled wolf emergencies with efficiency and patience. He taught many volunteers how to build fences and cut up meat for wolf feedings. In the kitchen Tom was known to whip up a mean curry sauce that could not be beat.

Josh not only satisfied the needed pampering it takes to keep the refuge systems working, but he was also great at pampering the staff's emotions and effectively functioned as a staff counselor. Josh liked to get his hands into everything, he would cut up a cow while teaching volunteer students carpentry and manage to weld a broken shovel in the middle of it all. Wherever you found Josh you found a big grin and a song.

Mission:Wolf is thankful for both of your efforts and wish you the best in future adventures.



Hopi dominates Shaman as their food is prepared.
Photo by Tracy Ane Brooks

Wolf Puppy Greeting Cards and Wolfy Gifts for People



Greeting cards are blank inside with a paragraph on the back about the featured wolf. High quality reproduction is suitable for framing. Buy a pack to send to special friends and family.

Each 5"x7" card comes complete with its own envelope.



Colorful photographs of resident wolf puppies capture the beautiful innocence inherent to all infants. These

wolves have grown considerably since the photos were taken and have established themselves within their packs at the refuge.

Individual cards.....\$ 1.00
Pack of twelve cards.....\$ 10.00

Photographic images by
Tracy Brooks

Printing Provided
by **The Dancing Crane**



POSTER

"THE WOLVES OF MISSION:WOLF"



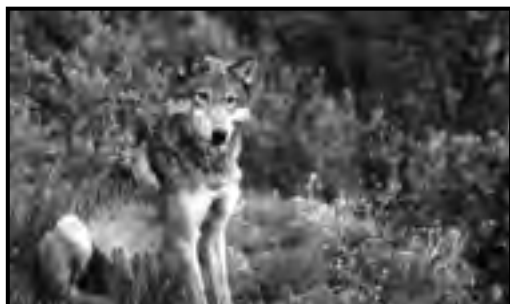
SNOWDANCER
photo by Tracy Brooks

32"x24" poster
\$25.00



THE NEW MISSION:WOLF T-SHIRT

AN ORIGINAL DESIGN BY TRACY BROOKS FEATURING RESIDENT WOLF
SABRETOOTH



Zephyr peers down on the refuge.
Photo by Tracy Ane Brooks

Become A Wolf Caretaker

The expression, **"WOLF-ING DOWN THE FOOD"** comes to life at feeding time. Each week we watch the resident wolves gulp down nearly a *thousand pounds* of raw meat in a few minutes. It is a sight we see often, yet it still leaves us somewhat speechless at each feeding. This food consists of road-kill deer & elk, fresh expired livestock (cows, calves & horses) donated by local ranchers, slaughterhouse scraps and fresh poultry from packing houses. Volunteers perform the grueling (and often fragrant) process of hauling in, butchering, and distributing animal carcasses to the sixteen packs of wolves and wolf-dog crosses. The money to pay for this and operate the refuge comes from our **wolf caretaker program**. Sales of merchandise and donations fill in the gaps.

To sponsor a wolf and order merchandise, fill in the coupon and send check or money order to **Mission:Wolf, PO Box 211, Silver Cliff, CO 81252.**

"Eugene S. Principe Jr. Wolf Education Fund"

An Endowment for the Future of the Mission:Wolf Education Program - min.\$250.00 or \$ _____

Wolf Caretaker Packets

Include;

- 8x10 color wolf photo
- One year membership
- Wolf Visions Newsletters
- Personalized Certificate
- M:W Window Decal

Student / Senior \$25.00/ year
Individual \$40.00/ yr.
School / Family \$100.00/ yr.
Feed the Pack \$1,000.00/ yr.

Circle name of wolf desired (we'll pick one if left blank)

Peaches, Sabretooth, Merlin, Jazmine, Beom, Mogali, Nedd, Druid, Polar Bear, Lily, Gizmo, Zephyr, Kestrel, Hina, Obediah, Nikkolah, Jordan, Lucus, Nyati, Guinness, Asha, Rasta, Whisper, Aspen, Yaqui, Ghost, Rogue, Saidee, Kawh, Porini, Skinwalker, Tierra, Shaman, Bear, Rami, Luna, Nali, Gandolf, Raven, Magpie

Business/Club: (print) _____

Your Name: _____

Address: _____

Wolf Caretaker Category
(\$ 25 / 40 / 100 / 1000) / yr. = \$ _____

Land Fund Artwork

Photo Poster of Uncle Bowdi (Wisdom) or Peaches (Snowdancer)
\$25.00 each

Wolf Photos, color 8x10
\$15.00 each

Wolves of Mission:Wolf Poster by resident artist Tracy Brooks
\$ 5.00 each

Color Photo Poster \$25 x _____ = \$ _____

8 x 10 Color Photos \$15 x _____ = \$ _____

M:W Posters \$5 x _____ = \$ _____

T-Shirts, Sweats and Tote Bags

Exclusive original design by Tracy Brooks

Wolves of Mission: Wolf

"Education vs Extinction"

-Short Sleeve T-Shirt (ss) \$15.00 ea.
-Long Sleeve T-Shirt (l s) \$18.00 ea.
-Sweat Shirt (s w) \$25.00 ea.
-Canvas Tote Bags-(Raven Design) \$15.00 ea.

Shirt Sizes: S, M, L, XL, XXL

Colors: Natural, Gray, White, Blue

Style Size Color Quantity

_____ \$ _____

_____ \$ _____

_____ \$ _____

Package and Shipping

Please add \$ 4 for totals = \$50 or less = \$ _____
\$ 6 for total more than \$50

Total US Funds Enclosed = \$ _____



Guinness in one of his rare moments of tranquility. Photo by Tracy Ane Brooks.



Luna looks so angelic and innocent, but we know better!
It won't be long before she's rested and getting into trouble again.
Photo by Tom Zeiber

Mission : Wolf
PO Box 211
Silver Cliff, CO
81252

Non-Profit Org.
US Postage Paid
Westcliffe, CO
Permit # 20